

Concerto Op. 3, No. 1

Arranged by Frederic Palmer

Antonio Vivaldi
(1678-1741)

Allegro

5

10

15

20

25

30

35

tr

40

45

3 50

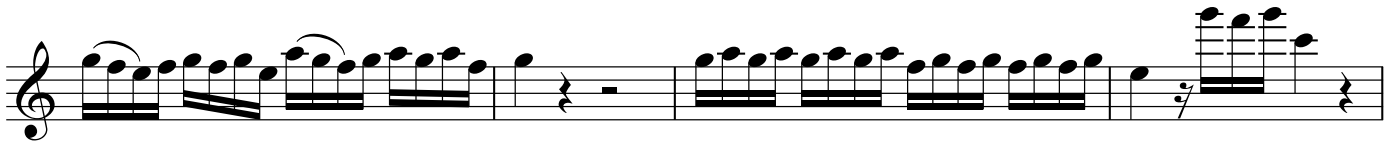
55

60

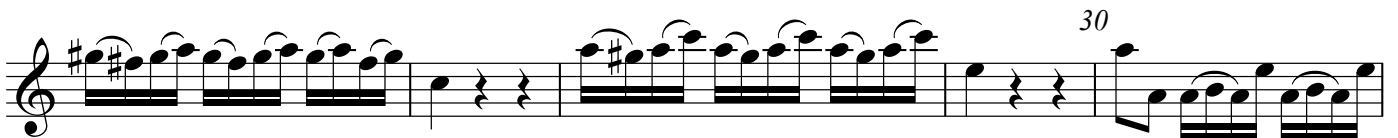
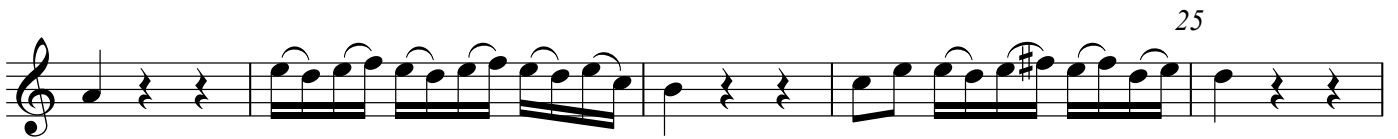
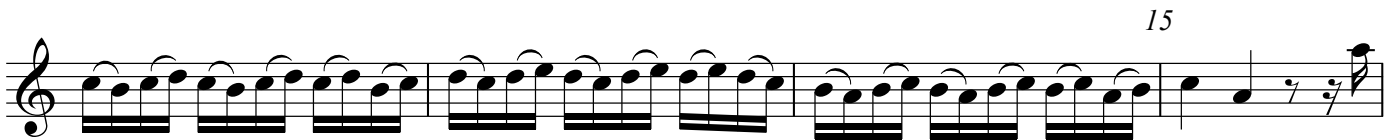
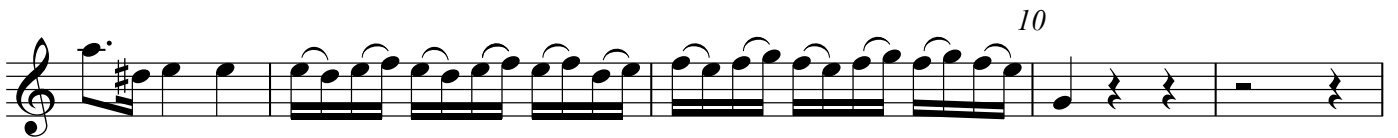
tr tr 65 tr tr

70

75



Largo e spiccato



35 *tr*

40

Allegro **3** 5

10

15 4 20

25

30 4 35

40

45 *tr*

50 55

60

65 70

tr 5 4

75

80 85 90

5 3

95

100